

## SPIDER TCI

Cast-in-place concrete insert:



Sizes: 3/8" thread

Max. Safe Working Load: 700 lbs

## PRODUCT INFORMATION

**FUNCTION** - Cast-in-place pre-insert concrete anchoring solution for the suspension of Mechanical and Electrical services in an indoor setting. Accommodates 3/8" threaded rod or 3/8" Stud Hanger.

**APPLICATION** - Insert is installed directly onto the wood forms/Shuttering prior to the concrete pour. Threaded rod/stud attaches into the insert from below.

**LOAD RATING** - All products have a 3:1 safety factor

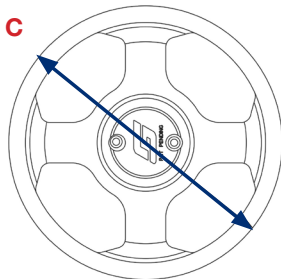
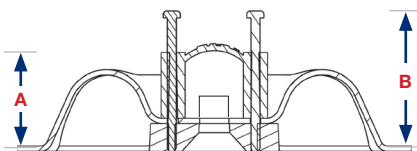
### MATERIAL SPECIFICATION -

#### Spider Anchor:

- Legs – pressed steel, passivated
- Nutsert – Steel, zinc plated, passivated
- Dome – Injection moulded plastic rubber
- Belly – Injection moulded plastic rubber

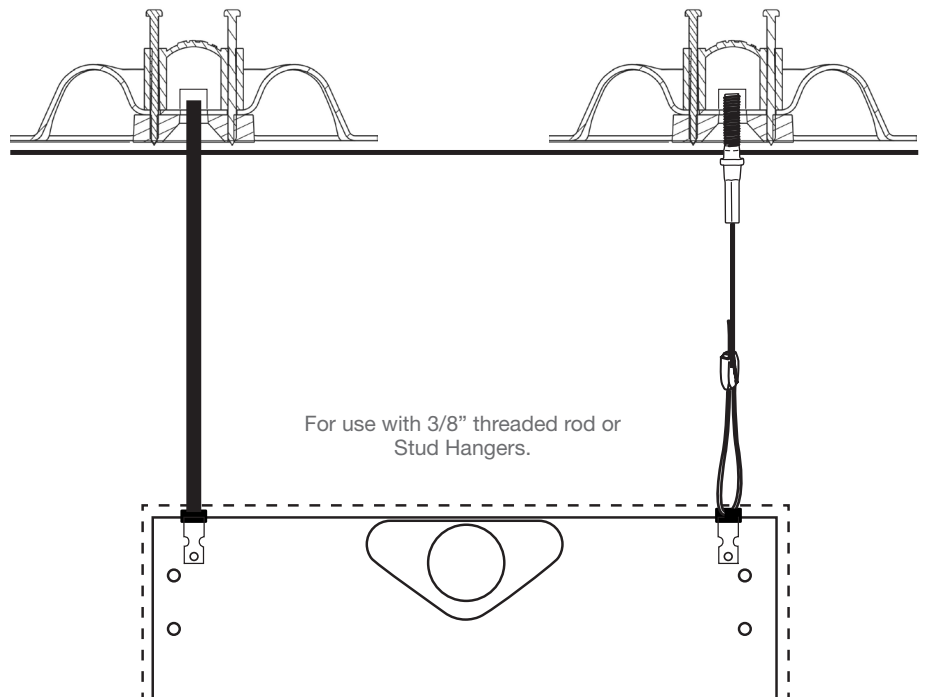
NOTE: Threaded Rod or Stud Hanger must be specified separately to the Insert.

## SIZE SPECIFICATION



Dimension	Size (in)
A	1 1/8
B	1 5/8
C	4 1/2

## APPLICATION



Gripple's policy is one of continuous development and innovation. We therefore reserve the right to alter specifications, etc. without notice.

BUS-SUB-GEN-US-SPIDER TCI

[www.gripple.com](http://www.gripple.com)

